

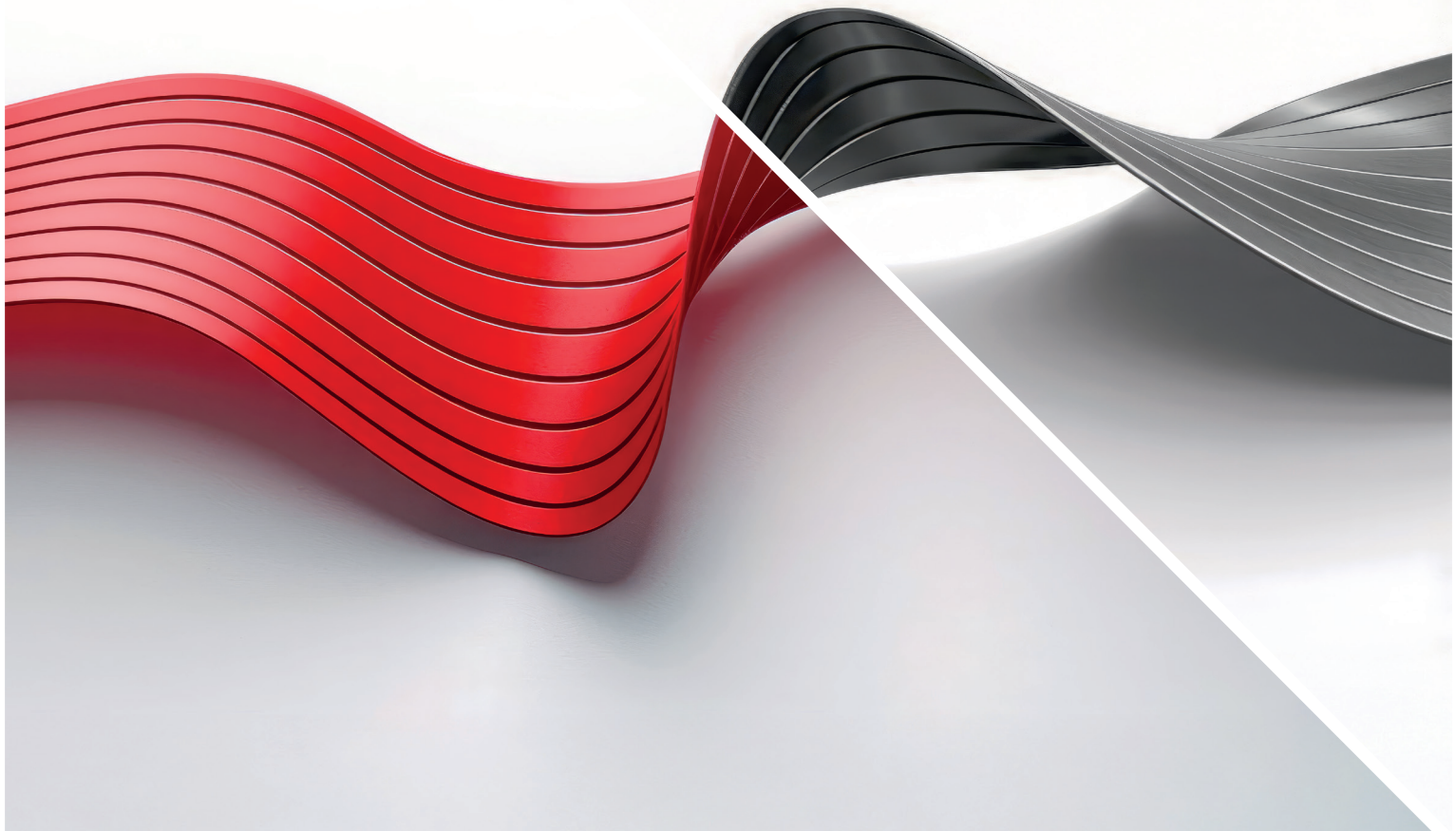


mitie

fire & security

Mitie Fire & Security

Protecting people, assets and places
through safety, security and compliance



Protect what matters most to you and your organisation

Domestic and international challenges mean robust fire and security provision has never been more critical.

Global security issues and geopolitical uncertainty are increasing risk to people, property, assets and infrastructure. In response, organisations must continuously assess threats, with ongoing management and access to emergency support, whenever and wherever required.

Meanwhile, compliance demands closer to home are growing. There's an ever greater need to adapt to changing regulatory requirements and show evidence of alignment. Yet budgets are tight, which heightens pressure in circumstances where organisations are expected to do more, despite constrained resources.

This comes against a backdrop of rapid technological change. New and emerging technology poses new risks - but also presents transformative opportunities organisations can't afford to miss.

Further issues include ageing, siloed systems that limit visibility and slow responses; rising crime and social unrest; and growing workforce and digital skills gaps as technology evolves faster than teams can keep pace.

The cost of failure? Safety may be compromised and business continuity impacted, resulting in reputational damage and potential penalties.

In this complex climate, protecting your people, assets and places can be fraught with uncertainty. But it doesn't have to be...





Reassurance only the experts can deliver

Bring peace of mind to your estate and protect what matters with the UK's most comprehensive fire and security organisation.

Mitie's self-delivered, technology-agnostic services cover every need, from risk assessment and systems design to installation, maintenance and monitoring. With our scale, expertise and national reach, we deliver safety, security and compliance.

Our services are intelligently integrated to safeguard your people, assets and places against the evolving risk landscape. And we're there for you, no matter where you are in the UK.

The UK's largest self-delivering fire and security business

40+

years of experience
and expertise

800+

specialist
engineers

24/7

coverage and rapid
response

40,000+

customers trust us
with 275,000+ systems
maintained

Accreditations include



National Security
Inspectorate (NSI)



NACOSS Gold



NSI Fire Gold



BAFE



NSI ARC Gold

Delivering **safety, security,** and **compliance**

4

With our expert support, your organisation won't just keep ahead of fire and security challenges, from compliance complexity to siloed systems. Our approach means safer operations, assured compliance and lower cost of protection, together with a range of associated benefits. Let's explore how...

Plan for tomorrow, not just for today

Our intelligence-led services are supported by award-winning technology, AI and analytics so you can protect yourself today, while preparing for the future. They include 24/7 remote monitoring, alarm handling, mobile response and the design, installation and maintenance of key systems.

Navigate legislation for complete compliance

Compliance is embedded in everything we do. We offer in-house expertise through a nationwide network of skilled engineers. This provides enhanced governance, structured compliance processes and meticulous documentation and reporting – so you stay ahead of demands, operate efficiently and avoid potential penalties.



Unified protection through nationwide, end-to-end capabilities

At Mitie Fire & Security, over 2,500 experts and 800 engineers provide bespoke solutions to suit all budgets and needs. We provide 24/7 coverage, rapid response and proven self-delivery across more than 80,000 UK sites. A single, trusted provider means you'll reduce reliance on sub-contractors to minimise risk and administration.

Tailored solutions designed by trusted, expert advisors

With the capacity and flexibility to support the largest and most complex estates, our bespoke, technology-agnostic solutions are based on deep sector- and industry-specific knowledge. We work with world-leading Original Equipment Manufacturers (OEMs) to ensure the best and most appropriate technology is used in every solution. Our engineers are constantly updating their capabilities, keeping track with the latest technologies at our training academy.

Prepare for the future with innovation-led expertise

Our industry-leading fire and security experts are supported by unrivalled facilities management data and cutting-edge AI and analytics technologies. Through these we provide vital operational insights. This approach is bolstered by the latest CCTV, access control and building management systems to provide maximum protection across your entire estate.

End-to-end capabilities, providing **peace of mind**

Fire & life safety solutions

Get total estate protection, delivered through active and passive fire protection solutions. Our services include risk assessments, detection and alarm systems, suppression systems, emergency lighting and complex multi-site enterprise systems. All delivered by our highly skilled engineering workforce.

- Fire detection and alarms
- Aspirating systems
- Vesda
- Emergency lighting
- Emergency voice communication systems
- Disabled toilet alarms
- Automatic opening vents
- Fire dampers
- Fire extinguishers
- Fire hose reels
- Fire blankets
- Fire safety signs
- Gas fire suppression
- Room integrity testing
- Kitchen fire suppression
- Fire sprinklers
- Water mist systems
- Dry risers
- Flow switch testing
- Fire hydrants
- Fire safety awareness training
- Fire marshal training
- Fire doors
- Fire stopping





Security systems solutions

Security is evolving fast. So are we. Our experts use award-winning technologies to offer expanded security systems capabilities. These range from bespoke, technology-agnostic system design and installation to maintenance and ongoing optimisation. Whether you need alarms, access control, CCTV or intelligent video analytics, we have everything you need to protect what's important.

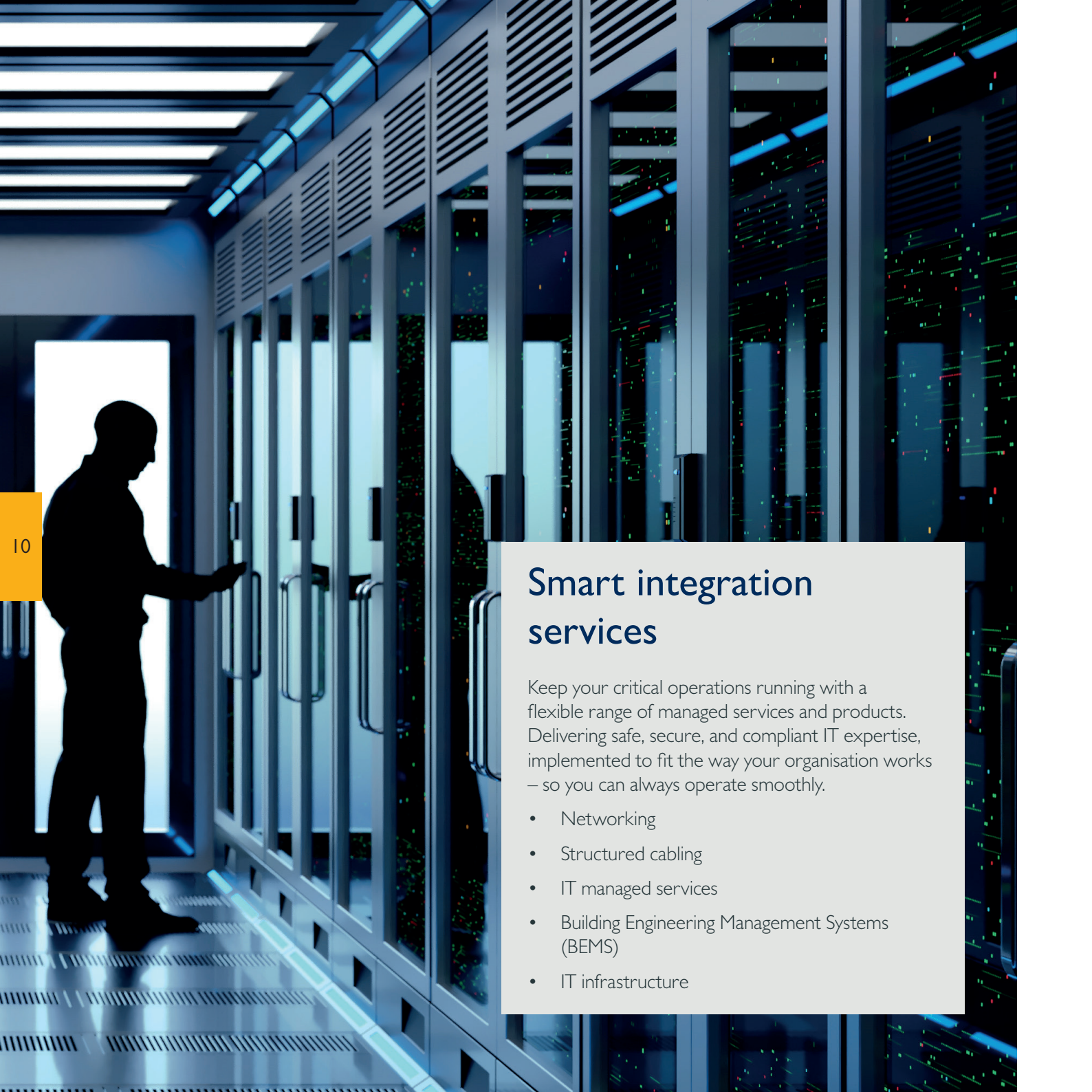
- Intruder alarms
- Access control
- CCTV systems
- Redeployable CCTV
- Perimeter Intrusion Detections Systems (PIDS)
- Physical security fencing
- Hostile Vehicle Mitigation (HVM)
- Barriers, gates and gate automation
- Integrated security management software
- Video and audio intercom
- Visitor management systems
- Civil engineering
- Earthing services
- Power & electrical
- Steel fabrication

Monitoring solutions

Get round-the-clock assurance for the protection of your entire estate. Our iSOC in Northern Ireland is a 24/7, NSI Gold accredited Alarm Receiving Centre provides expert remote monitoring delivered by a team of highly trained operatives, 365 days a year.

- Critical life alarm monitoring
- Intruder alarm monitoring
- Fire alarm monitoring
- Staff safety monitoring
- Panic alarms and monitoring
- CCTV monitoring
- Lone worker - Personal Safety Systems
- Body cams
- Asset tracking
- Technical support desk
- Control room
- Environmental Alarm Monitoring
- AI perimeter monitoring
- PMR (personal mobile radio)
- Vehicle theft and SOS monitoring
- First line triage - remote engineering





Smart integration services

Keep your critical operations running with a flexible range of managed services and products. Delivering safe, secure, and compliant IT expertise, implemented to fit the way your organisation works – so you can always operate smoothly.

- Networking
- Structured cabling
- IT managed services
- Building Engineering Management Systems (BEMS)
- IT infrastructure



Complete compliance, for legislative confidence.

Mitie Fire & Security supports our Facilities Compliance services, which also includes water, air, asbestos and more. Through our industry experts, we stay ahead of upcoming legislation to help you navigate the changing landscape with confidence.

Non-compliance can often result in penalties and insurance issues. With Mitie Facilities Compliance services, you get the right expertise and resources in place. Giving you the assurance that you remain compliant with all applicable legislation.

From the Building Safety Act 2022 to the Regulatory Reform (Fire Safety) Order 2005, Mitie Fire & Security have you covered, so you can confidently meet your compliance obligations.

“
Mitie Fire & Security
have gone above and
beyond in meeting
our requirements and
expectations

Teaching Hospitals NHS Foundation Trust

Safety. Security. Compliance.

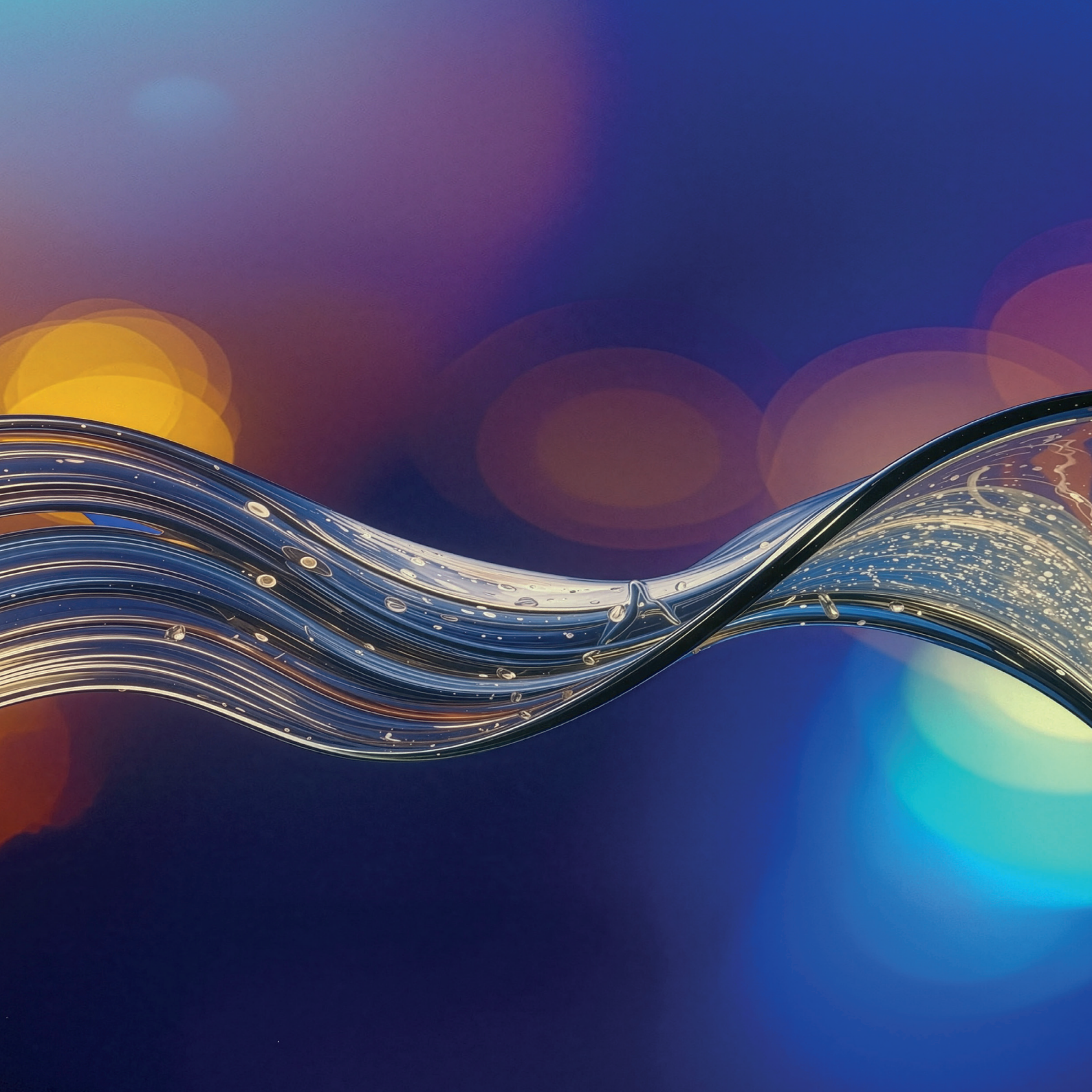
Mitie Fire & Security, protecting your people, assets, and places.

As the UK's largest fire and security organisation, we deliver safety, security and compliance – powered by people and technology.

From innovative, technology-agnostic fire and security systems, through to 24/7/365 monitoring solutions, Mitie deliver a full end-to-end service. With deep in house expertise and a nationwide network of highly skilled engineers, we help you navigate regulatory change, meet compliance obligations, and implement fire and security solutions. Customised to your organisation's specific risks, needs and future ambitions.

Our national scale, delivered through strong regional teams, ensures a consistent, high quality level of service.







fire & security

Talk to us about your fire & security needs

Get fire and security assurance from the UK's leading end-to-end provider. To discuss your specific needs, get in touch.

Mitie Fire and Security
Level 12
The Shard
32 London Bridge Street
London SE1 9SG

mitiefireandsecurity.com | hello@mitiefireandsecurity.com | 0333 010 2000